

Enjoy the Business World with Us

Experiencing the sustainable benefits of collaboration

Sep 2023



*Interport offers reliable,
effective, and cost-efficient
logistics solution to clients from
various industries.*

End-To-End
Logistics Solution Backed by
**World Class Facilities
and A Trusted Team of
Experts**

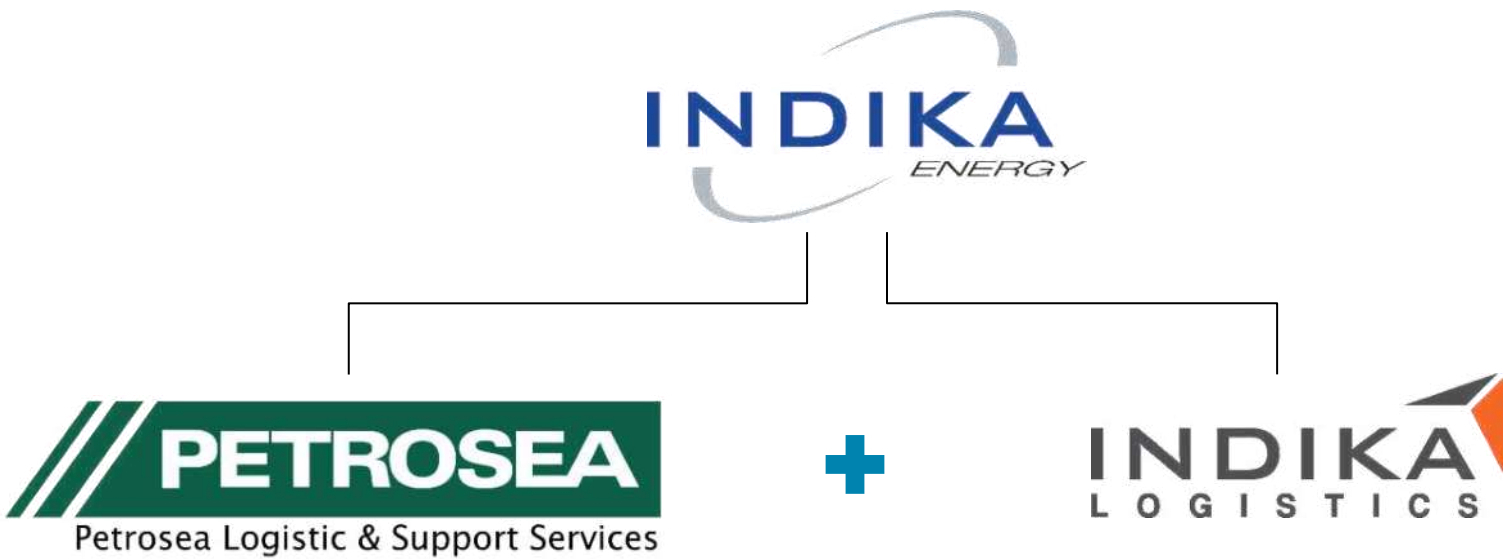
As an Indika Energy
Subsidiary

More than 20 Years Experiences
Build the Nation

Backed by an integrated network of facilities and advanced infrastructure, we have acted as a trusted logistics partner for hundreds of the biggest industry clients across Indonesia every step of the way from consultation, planning, to execution.

Our Journey

As a wholly owned subsidiary of Indika Energy by the merging the two logistic business



Since 2003, as one of PT Petrosea Tbk business line, Petrosea Logistics & Support Services has been servicing most of major oil & gas companies that operates within the country.

Since 2010, manages around 2.5 million tons of heavy, general and dry bulk cargo each year, as well as over a million tons of coal, fuel, and mobilizing 10 million passengers in East Indonesia.



interport

In 2018, both business were merged to create a new legal entity with complementary **strengths, greater access to capital**, with a **wider range of working assets** and **experience**.

International Standard Accreditation

Our Core Values 'beyond360' has been accredited as proven Management System in wide area such as Integrated Logistic, Material Handling, Warehousing, Storage Facilities, Waste Management and Port Management Services with latest international standard



ISO9001:2015 – **Quality** Management System

ISO45001:2018– Occupational **Health** and **Safety** Management System

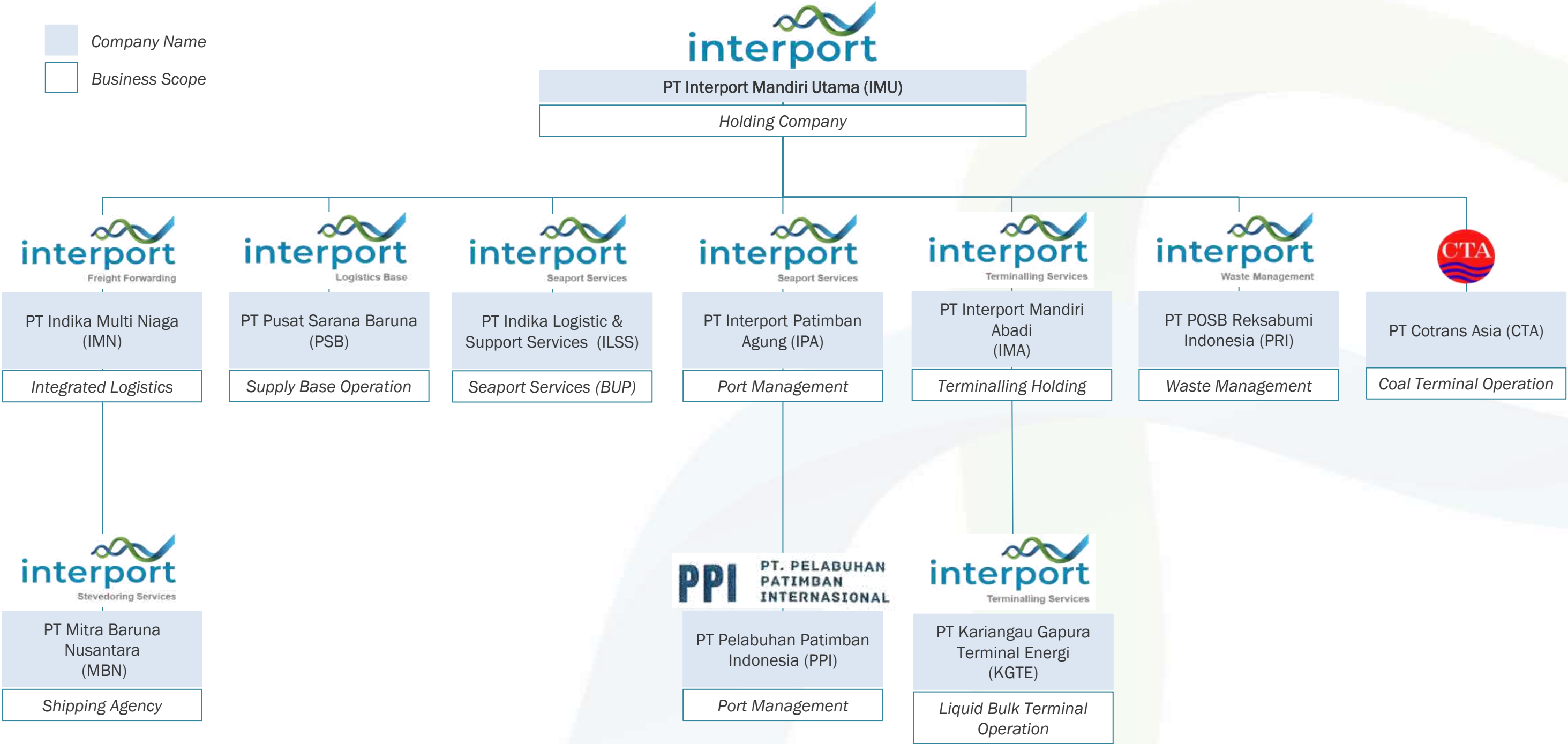
ISO14001:2015– **Environmental** Management System

ISO37001:2016– **Anti-bribery** Management System

– Interport is committed to consistently delivering excellences through its High-Performance Culture –

Group Structure

For a one stop Logistics Solution



Broad Strategic Locations

Tie the dots from East to West



TANAH MERAH

operates Tanah Merah Coal Terminal as well as managing fuel supplies



BALIKPAPAN

Operating a total length of 323m jetty designed for liquid bulk, general cargo and heavy lift cargo as well as fuel terminal with 97,300kL storage tank capacity.



CIKARANG

operates Cikarang Litrindo's coal stockpile and terminal



ADANG BAY

conduct a ship-to-ship operation for coal as an extension of Tanah Merah Coal Terminal operation



PATIMBAN

as one of share holder of PT Pelabuhan Patimban International, holds a 40-years concession right of Patimban Port, consist of International container and car terminal



SEMARANG

Port Services at Central Java – Terminal Storage Facilities for Bio Diesel and Mogas



SURABAYA

operates warehouse, open yard and stevedoring activity at jetty, as an alternate point of entry for general and project cargo shipment to East Indonesia

Operational Logistics Capabilities

Specialized in port & terminal operation and integrated logistics



Port & Terminal Operator

- Patimban port, Subang, West Java
- Interport Fuel Terminal, Balikpapan, East Kalimantan
- Tanah Merah Coal Terminal (TMCT), Paser, East Kalimantan

Pilot & tug services • Vessel agency • Jetty operation • Ship-to-ship operation • Stevedoring & cargodoring • Provision of port utilities (water, electricity, waste management and fuel supply) • Coal barging • Bulk, chemical and general cargo storage • Cold storage operation • Inventory management & goods preservation • Liquid and bulk storage & transport (fuel, CPO) • Heavy equipment operation & maintenance

Logistics Services

- Interport Business Park, Balikpapan, East Kalimantan
- Cikarang Listrindo, Cikarang, West Java
- Interport Surabaya Hub, East Java

Site survey • Jetty & logistics facility design, development & construction • Temporary logistics facility solution (marshalling yard, construction jetty) • Heavy equipment rental, operation and maintenance • Provision of certified heavy equipment operator • Customs Clearance • Warehouse management • Inventory management & goods preservation • Cargo Repacking, Relabeling • Trucking services • Sea-freight, airfreight (charter & non-charter) • Project logistics • Bonded Logistics Centre (PLB)



Integrated Logistics Solution for



Interport with the stories



- Goods transportation (Sea/Air/Land) from origin (domestic & overseas) to Interport Surabaya Hub
- Customs clearance at Jakarta and Surabaya
- Cargo consolidation at Interport Surabaya Hub
- Feeder Vessel from Surabaya to BP Supply Base at Sorong
- Stevedoring and cargodoring Service at Sorong Supply Base
- Material Management, goods preservation and provision of Bonded Logistics Center
- Management of accommodation and on-site catering
- On-site heavy equipment operation
- Material repacking and loading to BP's vessel (for transfer to offshore and Tangguh site)

SORONG SUPPLY BASE

Integrated Logistics Solution for



Interport with the stories

Interport manage marshalling yard at Gresik and Interport Surabaya Hub for CSTS consortium and its contractors with following scope of work:

- Cargo receiving at port
- Marshalling yard management
- Storage material at port/shipping yard
- Cargo repacking according to seaworthiness standard3
- Stuffing and securing material into container
- Provision of Stowage plan and stability calculation
- Stevedoring, cargodoring and lashing service
- Shipping agency arrangement



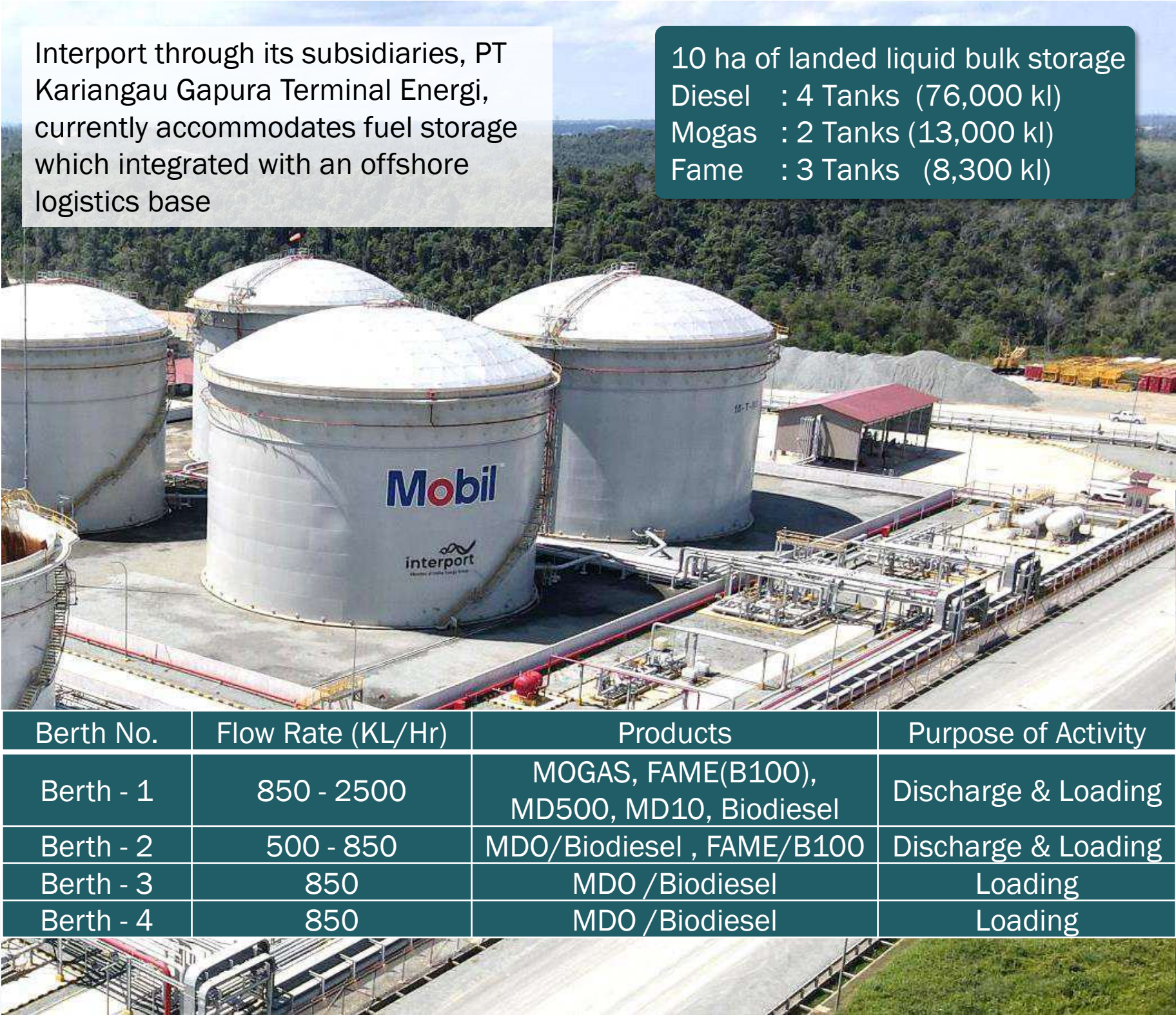
*) Copyright of PT Siam Maspion Terminal

Facility & Infrastructure

Interport Fuel Terminal, Balikpapan, East Kalimantan

Interport through its subsidiaries, PT Kariangau Gapura Terminal Energi, currently accommodates fuel storage which integrated with an offshore logistics base

10 ha of landed liquid bulk storage
Diesel : 4 Tanks (76,000 kl)
Mogas : 2 Tanks (13,000 kl)
Fame : 3 Tanks (8,300 kl)



Berth No.	Flow Rate (KL/Hr)	Products	Purpose of Activity
Berth - 1	850 - 2500	MOGAS, FAME(B100), MD500, MD10, Biodiesel	Discharge & Loading
Berth - 2	500 - 850	MDO/Biodiesel , FAME/B100	Discharge & Loading
Berth - 3	850	MDO /Biodiesel	Loading
Berth - 4	850	MDO /Biodiesel	Loading



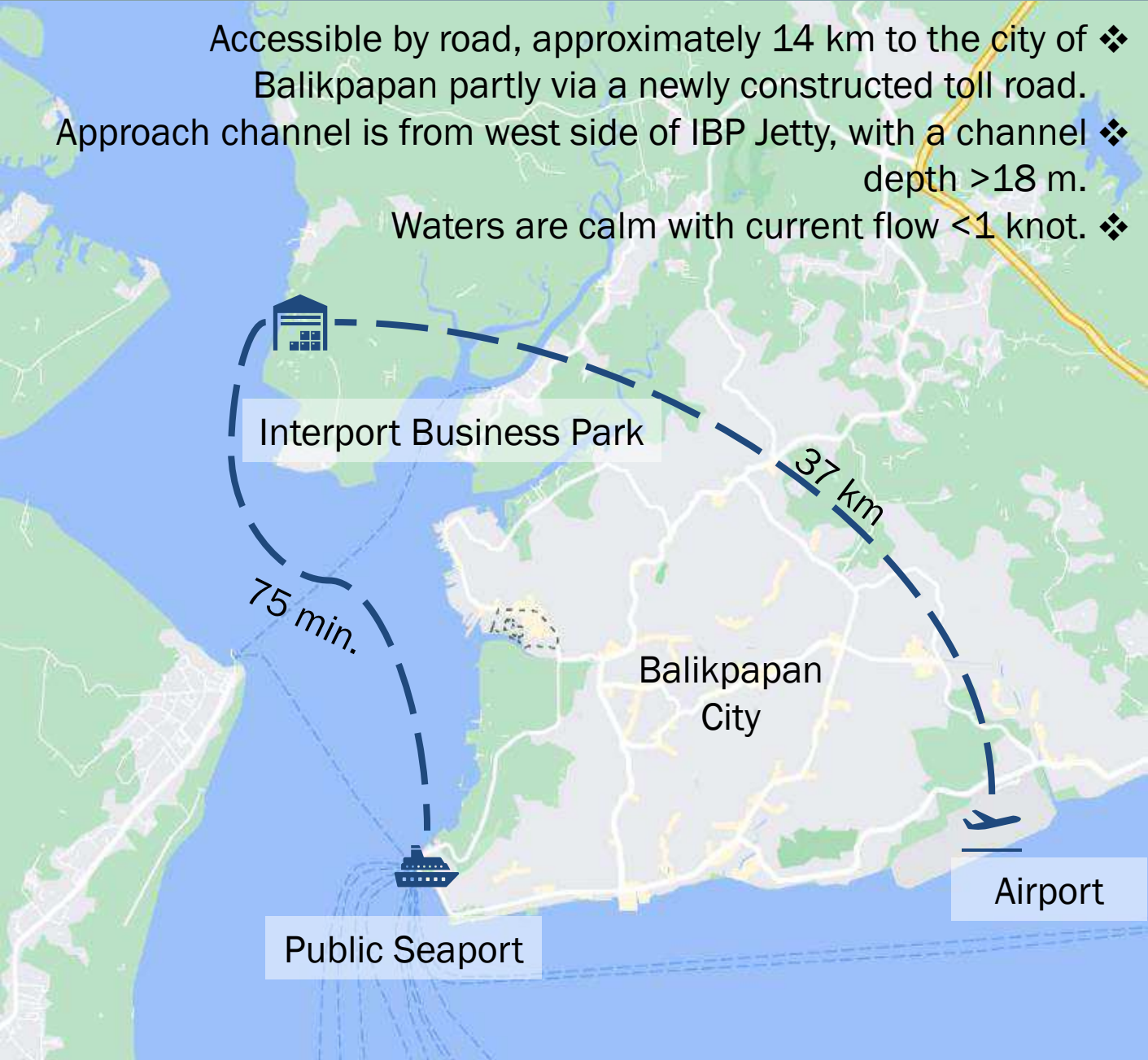
Facility & Infrastructure

Interport Business Park, Balikpapan, East Kalimantan



“A deep-water port connected to a privately owned 60 ha property, with infrastructure designed for mutual cooperation of inter-related business”

- ❖ Accessible by road, approximately 14 km to the city of Balikpapan partly via a newly constructed toll road.
- ❖ Approach channel is from west side of IBP Jetty, with a channel depth >18 m.
- ❖ Waters are calm with current flow <1 knot.



Participating in New Capital City Development, Interport currently handling more than 12,500T rebar steel shipment from IBP to IKN



30,000T combination steel structure and equipment shipment to Pertamina Refinery Development Master Plan (RDMP) handled by Interport from IBP



Facility & Infrastructure

Interport Business Park, Balikpapan, East Kalimantan



Interport operation is equipped with in-house operating system to support data integration and cargo traceability.

Facility & Infrastructure

Cikarang Listrindo, Cikarang, West Java, Port and Integrated Logistics Operation



Interport through its subsidiary – Indika Logistics Support Services (ILSS) is currently handling 1.4 million tons of coal/year for a coal fired power station located in West Java. The activity includes stockpile management, Balance of Plant, Coal Handling Plan, conveyor and associated maintenance.

Facility & Infrastructure

Patimban port, Subang, West Java



Interport through its subsidiary – PT Interport Patimban Agung - is one of shareholders of PT Pelabuhan Patimban International, who holds 40-years concession rights of Patimban Port in Subang, West Java.

The port consist of car terminal (operate since Dec 2021) and container terminal (estimate will start operation in 2025).

Facility & Infrastructure

Interport Surabaya Hub, East Java



Jetty Length	: 640 m
Jetty Wide	: 15 m
Draft	: 6 – 7 mLWS
Jetty Cap	: 3 T/m ² (60T Crane)
Yard (expandable)	: 4.563 m ²
Yard area	: 346 m ²
Yard Floor Capacity	: 5 T/m ²
Hazardous	: 250 m ²
Loading-Unloading	: 360 m ²
Empty Container Storage	: 810 m ²
Full Container Storage	: 410 m ²
Reach Stacker Capacity	: 45 T
Equipment:	: Forklift 3T Crane 50T
Warehouse (expandable)	: 2.673 m ²
Racking	: 770 m ²
WHS Floor Capacity	: 3 T/m ²
Floor Storage	: 456 m ²
Forklift capacity	: 3 T



Interport operates a warehouse including yard facility with direct access to jetty which cater clients from various industries. The strategic location enable an efficient and safe cargo handling as well as efficiency of transportation cost.



The facility is equipped with direct access to public road. All cargo will use Interport gate instead of port gate.



Facility & Infrastructure

Interport Surabaya Hub, East Java – Jetty Area



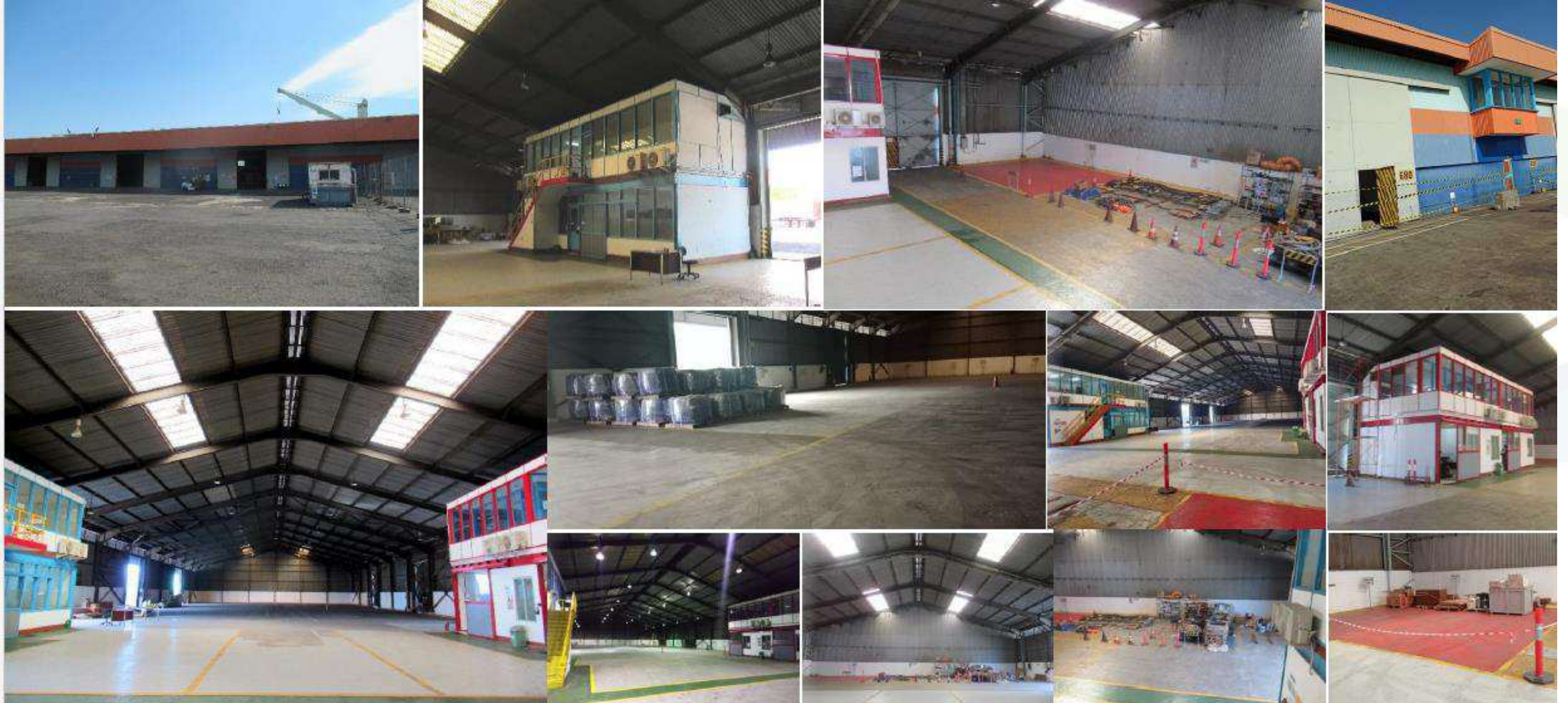
Facility & Infrastructure

Interport Surabaya Hub, East Java – Open Yard Area



Facility & Infrastructure

Interport Surabaya Hub, East Java - Warehouse



Facility & Infrastructure

Cotrans Asia (CTA), Paser, East Kalimantan



Interport acquiring 54.8% shares of CTA on February 13, 2023

Established in April 2004 and start operation since October 2004, CTA becomes logistics arm for Kideco Jaya Agung for coal transport management.

CTA arrange coal transportation from Tanah Merah Coal Terminal (TMCT) to Adang Bay ship-to-ship point where the coal will be transferred from barge to bulk carrier (geared & gearless) using floating crane.

Our Clients

Trust and professional for extra miles



Thank you

Graha Mitra 7th Fl
Jl. Jend. Gatot Subroto Kav21
RT.3/RW.2
Karet Semanggi, Setiabudi
Jakarta Selatan 12930
Indonesia
P: + 62 21 50711111
F: + 62 21 50711102

W : www.interport.co.id
E : bd.team@interport.co.id
I : [@interportgroup](https://www.instagram.com/interportgroup)